

5960-5962

## MINIATURE COMPRESSION LOAD CELLS

Sealed and compact compression sensors.



Model 5960 - 5 kN



### Features

- o Protection class: IP65
- o Very competitive prices
- o Material:
  - stainless steel (5960)
  - anodised aluminium alloy (5962)
- o Cable length: 1.5 m (other lengths available on request)

### Most popular options



Ex i

IP67  
MARINE

IP68

**Application(s)** SENSY's load cell 5960-5962 are perfectly designed for the following applications:

- Industrial force measurement in confined spaces,
- Weight control.

### Capacities

5962: 200 - 300 - 500 N

5960: (0.75) - 1 - (1.5) - 2 - (3) - 5 - (7.5) - 10 - (15) - 20 kN

| Specifications                                  | 1 %       |                |
|---|-----------|----------------|
| Combined error (non-linearity + hysteresis)     | <± 1      | % F.S.*        |
| Repeatability error                             | <± 0.5    | % F.S.*        |
| Creep error over 30 min.                        | <± 0.25   | % F.S.*        |
| Zero shift after loading                        | <± 0.2    | % F.S.*        |
| Reference temperature                           | 23        | °C             |
| Compensated temperature range                   | -10...+45 | °C             |
| Service temperature range                       | -25...+70 | °C             |
| Storage temperature range                       | -50...+85 | °C             |
| Temperature coefficient of the sensitivity      | <± 0.2    | % F.S.* / 10°C |
| Temperature coefficient of zero signal          | <± 0.2    | % F.S.* / 10°C |
| Zero balance                                    | ± 0.05    | mV/V           |
| Nominal sensitivity                             | 1.5       | mV/V           |
| Input resistance                                | 1000 ± 3  | ohm(s)         |
| Output resistance                               | 1000 ± 3  | ohm(s)         |
| Insulation resistance (50 V)                    | > 5000    | Mohm(s)        |
| Reference excitation voltage                    | 5         | VDC            |
| Permissible nominal range of excitation voltage | 3..10     | VDC            |
| Safe load limit                                 | 120       | % F.S.*        |
| Breaking load                                   | >300      | % F.S.*        |
| Permissible dynamic loading                     | 40        | % F.S.*        |

\* F.S. : Full Scale.

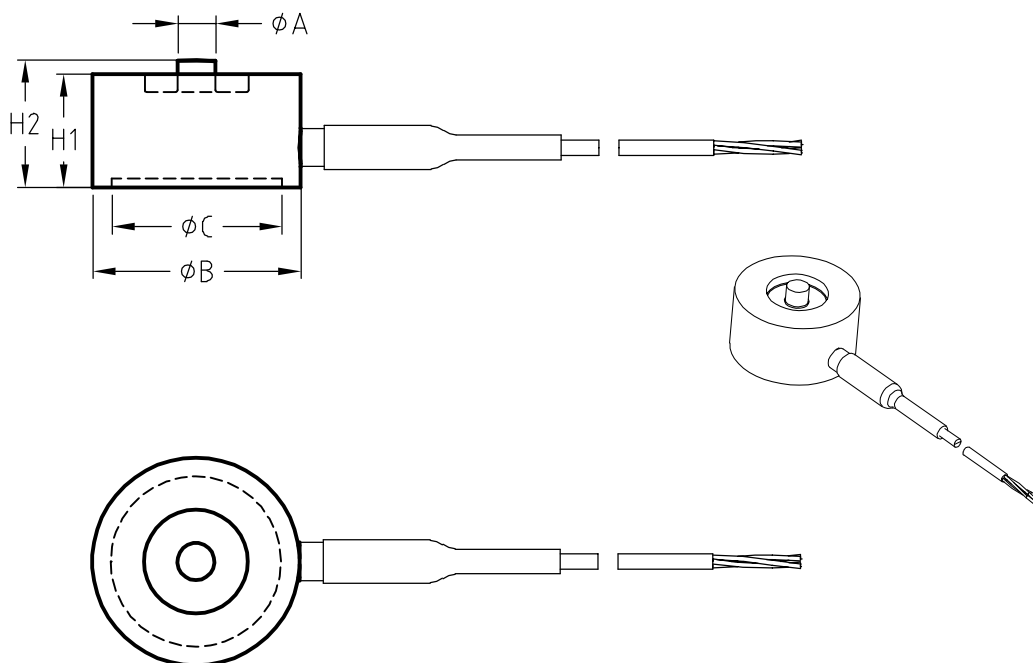
Specifications subject to change without notice.



ISO 9001 certified

rev. : 09/07/2020

5960-5962 > STANDARD DIMENSIONS



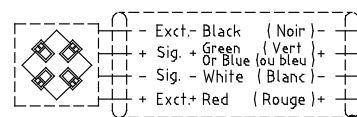
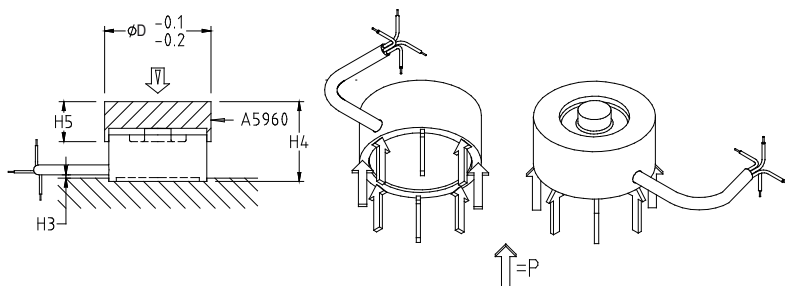
| Ref. Item* | Capacities   | ØA | ØB   | ØC    | H1 | H2   | P<br>(N/mm <sup>2</sup> ) | Max. Deflexion<br>(mm) | H3<br>(Max) | H4   | H5 | ØD | Weight<br>(kg) |
|------------|--------------|----|------|-------|----|------|---------------------------|------------------------|-------------|------|----|----|----------------|
| 5962-A     | 200 - 500 N  | 4  | 22   | 19.75 | 12 | 13.5 | 2.7 to 6.8                | 0.08 to 0.12           | 1.5         | 17.5 | 8  | 24 | ± 0.042        |
| 5960-B     | 750 - 5000 N | 4  | 22   | 19.75 | 12 | 13.5 | 10.16 to 68               | 0.08 to 0.12           | 1.5         | 17.5 | 8  | 24 | ± 0.052        |
| 5960-C     | 10 - 20 kN   | 8  | 29.5 | 23    | 14 | 16   | 37.3 to 0.20              | 0.14 to 0.20           | 2           | 24   | 12 | 32 | ± 0.091        |

→ Other capacities and dimensions available on request

Dimensions in mm

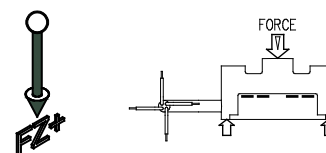
Other views

Wiring



Standard : Cable screen not connected to transducer  
Faradisation non connectée au capteur

Load direction



Sales rep.:



Sensors AS  
Setersletta 3  
NO-2006 LØVENSTAD

+47 67 90 43 00  
post@sensors.no  
www.sensors.no

Rev. 23/10/2018